



EAGLELIFT

LIFTGATES

OWNER'S MANUAL

Operating, Safety, and Maintenance Instructions
with Parts Lists

DIRECT LIFT LIFTGATES



ATTENTION:

IT IS IMPORTANT TO FOLLOW THE INSTRUCTIONS SET FORTH IN THIS MANUAL TO ENSURE PROPER OPERATION OF THIS EQUIPMENT.



IMPORTANT:

AS FINAL STAGE MANUFACTURER, INSTALLER OF THIS LIFTGATE IS RESPONSIBLE FOR COMPLIANCE WITH ALL PERTINENT STATE AND FEDERAL SAFETY STANDARDS AS WELL AS FOR FOLLOWING RECOMMENDATIONS OF CHASSIS MANUFACTURER.

EAGLE LIFT

3501 South 11th Street
Council Bluffs, IA 51501 U.S.A.
Phone (712) 322-1111 FAX (712) 328-0026
e-mail: eagle@eagleliftgates.com

EAGLE LIFT'S LIMITED WARRANTIES

EAGLE LIFT LIFTGATES

These warranties cover all models of liftgates manufactured by Eagle Lift.

3-YEAR LIMITED WARRANTY

Eagle Lift warrants to the original owner that the pump and motor unit used in these products shall be free from defects in material and workmanship for THREE YEARS from the date of purchase. If such a defect appears during the warranty period, Eagle Lift will repair or replace (at its option) these components without charge if applicable claim procedures are followed.

1-YEAR LIMITED WARRANTY

As to defects not related to the components specified above, Eagle Lift warrants to the original owner that this product shall be free from defects in material and manufacturing workmanship for ONE YEAR from the date of purchase. If such a defect appears during the warranty period, Eagle Lift will repair or replace (at its option) your product without charge if applicable claim procedures are followed.

The product must be properly installed, maintained, and serviced in order to eligible for warranty.

The warranties apply only to Eagle Lift manufactured products and exclude add-on attachments and modifications.

The warranties do not cover defects or damage to products that have been improperly installed, abused, misused, or damage caused by the carrying of corrosive materials or by reason of an accident.

The above stated warranties are exclusive. There are no warranties which extend beyond the above stated warranties. There are no implied warranties of merchantability or fitness for any purpose. Incidental damages and consequential damages are excluded.

Claims may be made by contacting an authorized Eagle Lift distributor.

Eagle Lift or its authorized representative reserves the right to inspect products claimed to be defective for warranty purposes and dispose of the claim as it sees fit, including repair or replacement. Unauthorized repair or replacement prior to inspection may void the warranty.

All products or components claimed to be defective must be returned to the factory for warranty consideration within 30 days of the claim. All items shipped out from the factory for warranty reasons will be sent freight prepaid and all items returned to the factory for warranty must be sent freight prepaid.

Labor performed for warranty reasons must be done by an authorized Eagle Lift distributor or by a person or company pre-approved by Eagle Lift in writing.

FOREWORD


This manual provides operating procedures to help you obtain efficient and dependable use from your Eagle Lift Liftgate. This manual also contains specifications, maintenance information, safety suggestions, and other general information. Eagle Lift's policy is one of continuous improvement, and it reserves the right to make changes in design and specifications at any time without notice and without obligation to modify equipment previously built.

Please read this manual carefully and understand it before attempting to operate, maintain, or repair your liftgate. Keep this manual with the liftgate for future reference. If at any time you have any questions you should contact your Eagle Lift dealer. The dealer has trained service technicians and Eagle Lift replacement parts to keep your Eagle Lift liftgate in top operating condition at all times.

Throughout this manual you will see the following symbol:  This is the Safety-Alert Symbol:

Meaning: ATTENTION! BECOME ALERT! YOUR SAFETY IS INVOLVED!

The terms **CAUTION!**, **WARNING!**, and **DANGER!** are used in conjunction with the Safety-Alert Symbol to identify the hazard level for items of personal safety.

 **CAUTION!** means hazards or unsafe practices that could result in minor personal injury or product or property damage.

 **WARNING!** means hazards or unsafe practices that could result in severe personal injury or death.

 **DANGER!** means immediate hazards that will result in severe personal injury or death.



SAFETY FIRST!!!



Before using an Eagle Lift Liftgate, you should consult all applicable safety standards and instruct the operator fully in its use. Be sure that all personnel who intend to operate the liftgate read and understand this manual fully and comply with it and all safety standards.

OWNER'S INFORMATION

DATE PURCHASED: _____ **GATE SERIAL NUMBER:** _____
INSTALLED BY: _____

TABLE OF CONTENTS

MODELS	5
INTRODUCTION	6
GENERAL SPECIFICATIONS AND CAPACITIES	7
EDL SERIES	7
EDL16 SERIES	8
LIFTGATE TERMS	9
EDL SERIES	9
Figure 1 – Liftgate Terms	9
EDL16 SERIES	10
Figure 2 – Liftgate Terms	10
OPERATING INSTRUCTIONS	11
Figure 3 – Platform Diagram	11
Figure 4 – Control Handle	11
Figure 5 – Platform Drop-away	12
SPARE TIRE ACCESS	13
Figure 6 – Spare Tire Access Hole Locations	13
SERVICE AND MAINTENANCE	14
TROUBLESHOOTING GUIDE	15
ELECTRICAL WIRING DIAGRAMS	16
STANDARD CONTROL	16
Figure 7 – Standard Control Diagram	16
OPTIONAL REMOTE CONTROL	17
Figure 8 – Optional Remote Control Diagram	17
DECAL LOCATIONS	18
Figure 9 – Decal Location Diagram	18
DECALS	19
Figure 10 – Decals	19
LIFTGATE PARTS BREAKDOWNS	20
EDL SERIES	20
Figure 11 – Liftgate Parts Breakdown	20
EDL SERIES PARTS LIST	21
EDL16 SERIES PARTS BREAKDOWN	22
Figure 12 – Liftgate Parts Breakdown	22
EDL16 SERIES PARTS BREAKDOWN	23



MODELS

This manual applies to the following series and models of Direct Lift Liftgates:

EDL SERIES (ONE CYLINDER)

MODELS EDL-54SB, EDL-58, EDL-60, EDL-60SB, and EDL-64
1300 # CAPACITY, 40" MAX BED HEIGHT

EDL16 SERIES (TWO CYLINDER)

MODELS EDL16-78 and EDL16-86
1600 # CAPACITY, 50" MAX BED HEIGHT



INTRODUCTION

Thank you for purchasing an Eagle Lift Liftgate. Eagle Lift liftgates are the finest on the market today. In order to provide years of service, it is very important that you operate and maintain your liftgate properly.

This manual contains information necessary for the proper operation and maintenance of your cable lift liftgate. If you require service for repairs other than simple routine maintenance, please take your liftgate to an authorized **Eagle Lift Servicing Distributor**. If you need information for an Eagle Lift Servicing Distributor in your area, please contact us at:

Eagle Lift

3501 South 11th Street

Council Bluffs, IA 51501 U.S.A.

Phone (712) 322-1111 FAX (712) 328-0026

e-mail: eagle@eagleliftgates.com

Before operating the liftgate, please study this manual carefully and keep it in a handy place for future reference. Above all remember – **SAFETY FIRST!**

1. **Always** stand clear of liftgate when operating. **Always** make certain FEET and HANDS are clear of space between liftgate and truck when raising, and clear of space between liftgate and ground when lowering. Also, keep clear of lifting linkage (arms) when liftgate is in operation.
2. This is not a passenger lift – **DO NOT RIDE!**
3. **⚠ WARNING!** Improper operation can result in serious injury – read operating instructions **before** use.
4. Any alteration of liftgate voids warranty and may void compliance with Federal Motor Vehicle Safety Standards (FMVSS).
5. Only authorized, properly trained **adults** should operate this liftgate.
6. When not in use, always **store platform in closed position** with both storage lock latches secured.
7. **Never** leave liftgate unattended with parking lights “ON” or key in ignition.
8. Decals **must** remain on liftgate for safety purposes. Replace any damaged or missing decals immediately.
9. **Never** exceed rated load capacity. **Always** center load on platform and as close to truck as possible.
10. **Always** disconnect negative (–) battery cable terminal when welding on liftgate or truck.



GENERAL SPECIFICATIONS AND CAPACITIES

EDL SERIES

MODELS EDL-54SB, EDL-58, EDL-60, EDL-60SB, and EDL-64

	OVERALL WIDTH	WIDTH BETWEEN UPRIGHTS
MODEL:		
EDL-54	55 5/8-inch	47 1/8-inch
EDL-58	60 3/4-inch	52 1/4-inch
EDL-60	60 3/4-inch	52 1/4-inch
EDL-64	66 1/4-inch	57 3/4-inch

<u>ALL EDL SERIES MODELS</u>	
OVERALL HEIGHT	37-inch
TRUCK BED TO BOTTOM OF UPRIGHT	15 1/2-inch
MAXIMUM BED HEIGHT	40-inch
RATED LOAD CAPACITY (LIFT AND LOWER) LOAD MUST BE UNIFORMLY SPREAD ABOUT THE PLATFORM CENTER.	1300-lb.
HYDRAULIC CYLINDER SIZE	2 1/2-inch bore 10-inch stroke
PUMP/MOTOR RESERVOIR CAPACITY	Approx. 63 cubic-inch
PUMP OPERATING PRESSURE	2250 psi. max
ELECTRICAL SYSTEM	12VDC, 180 amp. max. draw @ 2250 psi



EDL16 SERIES

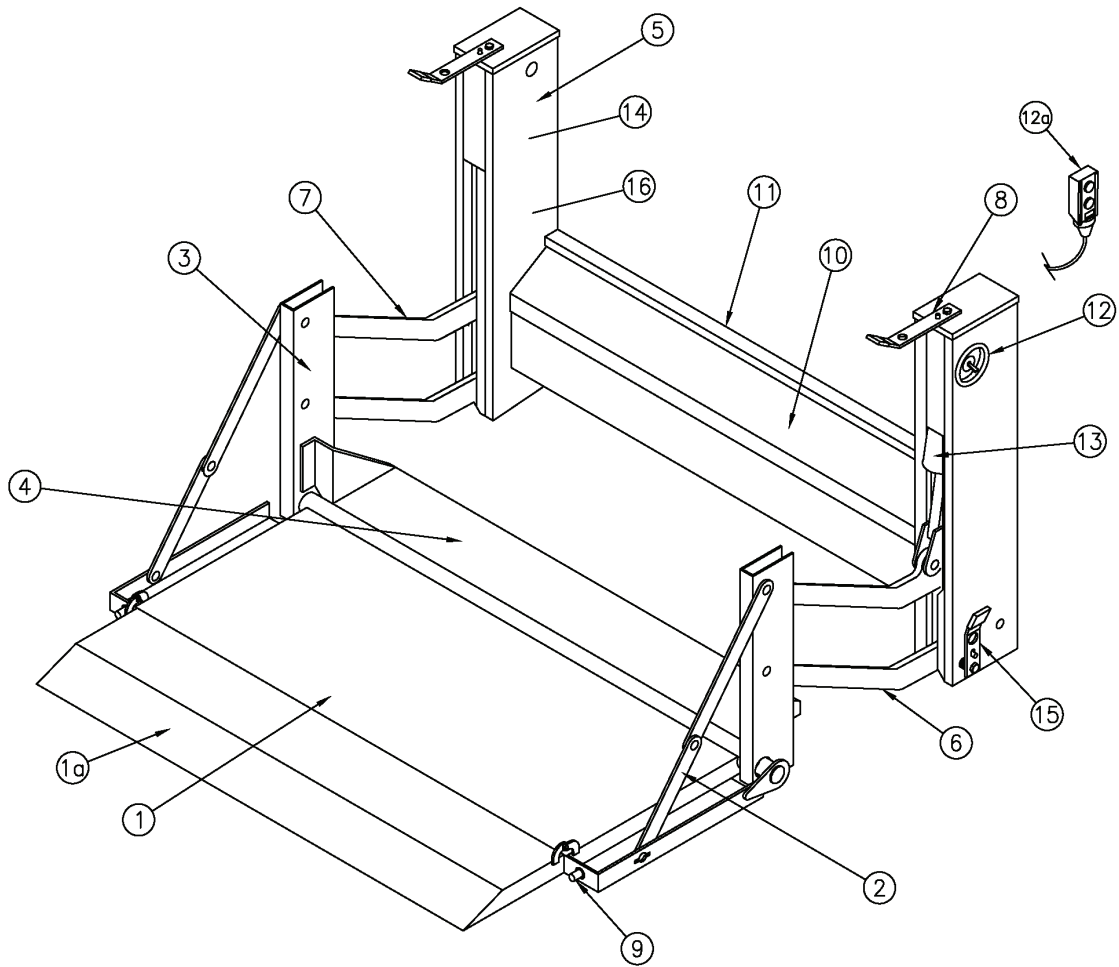
MODELS EDL 16-78 and EDL 16-86

	OVERALL WIDTH	WIDTH BETWEEN UPRIGHTS
MODEL:		
EDL16-78	85 5/8-inch	74 1/2-inch
EDL16-86	91 1/8-inch	80-inch

<u>ALL EDL16 SERIES MODELS</u>	
OVERALL HEIGHT	47-inch
TRUCK BED TO BOTTOM OF UPRIGHT	19 1/2-inch
MAXIMUM BED HEIGHT	50-inch
RATED LOAD CAPACITY (LIFT AND LOWER) LOAD MUST BE UNIFORMLY SPREAD ABOUT THE PLATFORM CENTER.	1600-lb.
HYDRAULIC CYLINDER SIZE	2 1/2-inch bore 18-inch stroke
PUMP/MOTOR RESERVOIR CAPACITY	Approx. 334 cubic-inch
PUMP OPERATING PRESSURE	1250 psi. max
ELECTRICAL SYSTEM	12VDC, 180 amp. max. draw @ 1250 psi

LIFTGATE TERMS

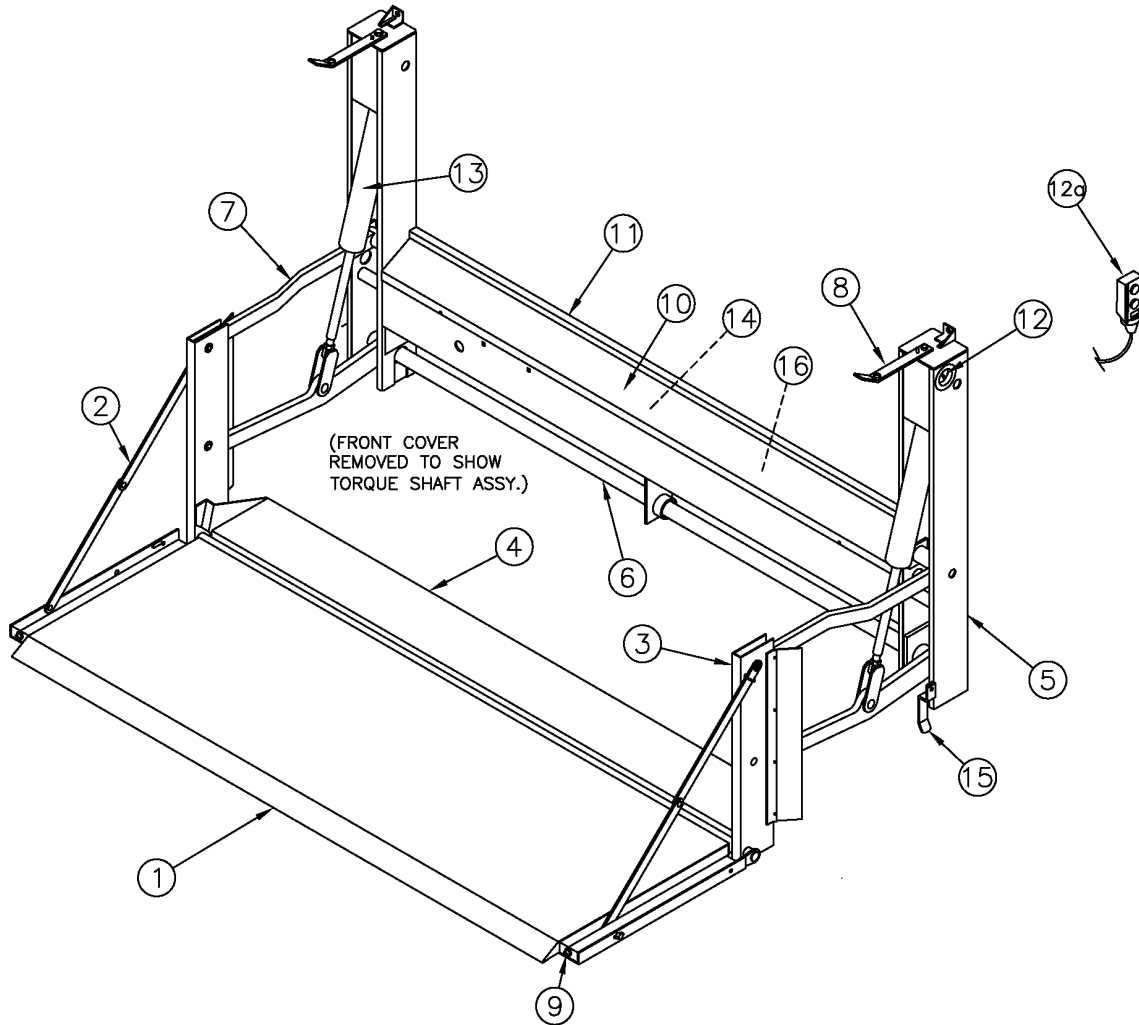
EDL SERIES



ITEM	DESCRIPTION	ITEM	DESCRIPTION
1	PLATFORM	10	MAIN HOUSING COVER
1a	(OPTIONAL) PLATFORM RAMP	11	MAIN HOUSING
2	PLATFORM SUPPORT LINKS	12	CONTROL SWITCH
3	PLATFORM UPRIGHT	12a	(OPTIONAL) HAND HELD REMOTE CONTROL
4	FALSE FLOOR	13	HYDRAULIC CYLINDER ASSEMBLY
5	MAIN HOUSING UPRIGHT	14	HYDRAULIC POWER UNIT (inside RDSD main housing)
6	LOWER PARALLEL ARM	15	FOLD DOWN LATCH
7	UPPER ARM/TORQUE TUBE ASSEMBLY	16	RELAY / ELECTRICAL HARNESS SYSTEM (inside RDSD upright housing)
8	STORAGE LATCH		
9	PLATFORM LATCH TAB		

Figure 1 – Liftgate Terms

EDL16 SERIES



ITEM	DESCRIPTION	ITEM	DESCRIPTION
1	PLATFORM	10	MAIN HOUSING COVER
2	PLATFORM SUPPORT LINKS	11	MAIN HOUSING
3	PLATFORM UPRIGHT	12	CONTROL SWITCH
4	FALSE FLOOR	12a	(OPTIONAL) HAND HELD REMOTE CONTROL
5	MAIN HOUSING UPRIGHT	13	HYDRAULIC CYLINDER ASSEMBLY (2)
6	LOWER LIFT ARM/TORQUE SHAFT ASSY	14	HYDRAULIC POWER UNIT (inside main housing)
7	UPPER PARALLEL ARM	15	FOLD DOWN LATCH
8	STORAGE LATCH	16	RELAY / ELECTRICAL HARNESS SYSTEM (inside main housing)
9	PLATFORM LATCH TAB		

Figure 2 – Liftgate Terms

OPERATING INSTRUCTIONS

1. To operate the liftgate, turn the vehicle's parking lights "ON". This will activate the electrical system on the liftgate, supplying 12 VDC power.
2. Unlatch left (RDSD) storage latch by lifting up and turning outward.

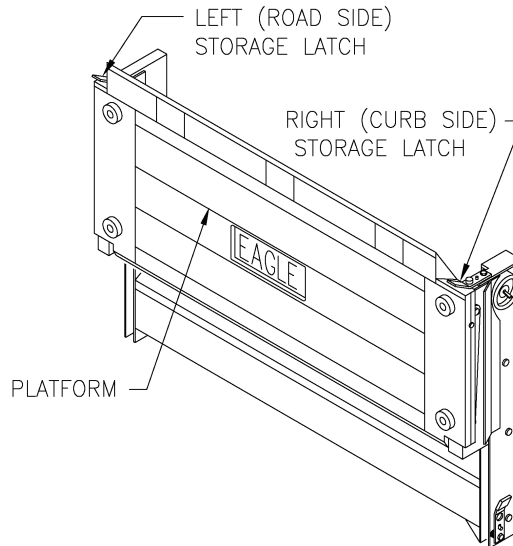


Figure 3 – Platform Diagram

3. Unlatch right (CBSD) storage latch by lifting up. Manually lower platform down to level position.
4. **To lower platform to ground:** Press down on control switch. You may stop platform at any desired height by releasing control switch (switch should automatically return to neutral position upon release).
5. **To raise platform to truck bed:** Lift up on control switch.

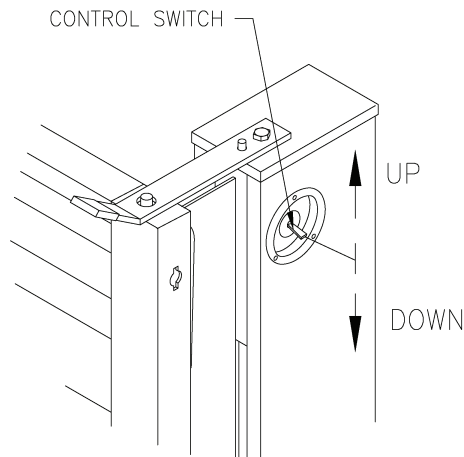


Figure 4 – Control Handle

6. **To store gate:** Raise platform until level with truck bed. Manually lift platform to closed position. CBSD storage latch will engage latch pin with pressure on platform. Lift and pivot RDSD storage latch onto platform latch pin.
7. When finished using the liftgate, turn the vehicle's PARKING LIGHTS "OFF". This will disconnect the power to the liftgate.
8. **To place platform in drop-away position:** Manually lift platform and at same time, lift RDSD platform link support upward at hinge point. This allows keyhole of platform and link support pin to line up. Disconnect link support from platform. Repeat procedure for CBSD link support. Platform will now drop-away for dock or forklift loading. Secure platform with fold-down latch (located near bottom of CBSD upright).

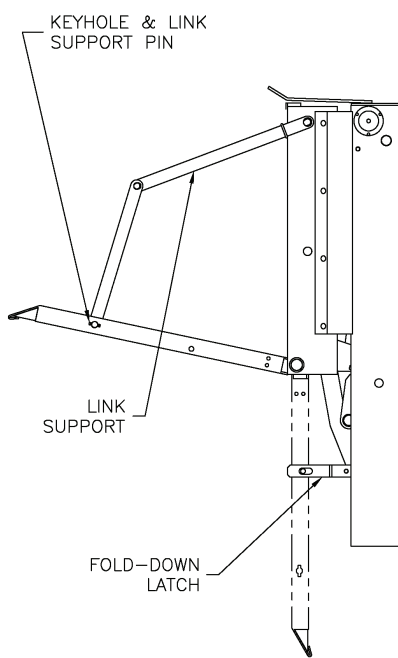


Figure 5 – Platform Drop-away

⚠ CAUTION! PLATFORM IS SPRING LOADED AND UNDER CONSIDERABLE COMPRESSION WHEN LOCKED IN DOWN POSITION FOR DOCK LOADING. USE EXTREME CARE WHEN LATCHING AND UNLATCHING TO PREVENT INJURY.

⚠ CAUTION! USE OF DROP-AWAY IS ONLY FOR LOADING AT DOCKS OR WITH FORKLIFTS. DO NOT STORE PLATFORM IN THIS POSITION!

SPARE TIRE ACCESS

NOTE: Spare tire access required only on Model EDL-58 and EDL-60 liftgates.

1. Raise liftgate back into position and lift platform into storage locks.
2. Locate appropriate access opening for vehicle applications (See Figure 6).

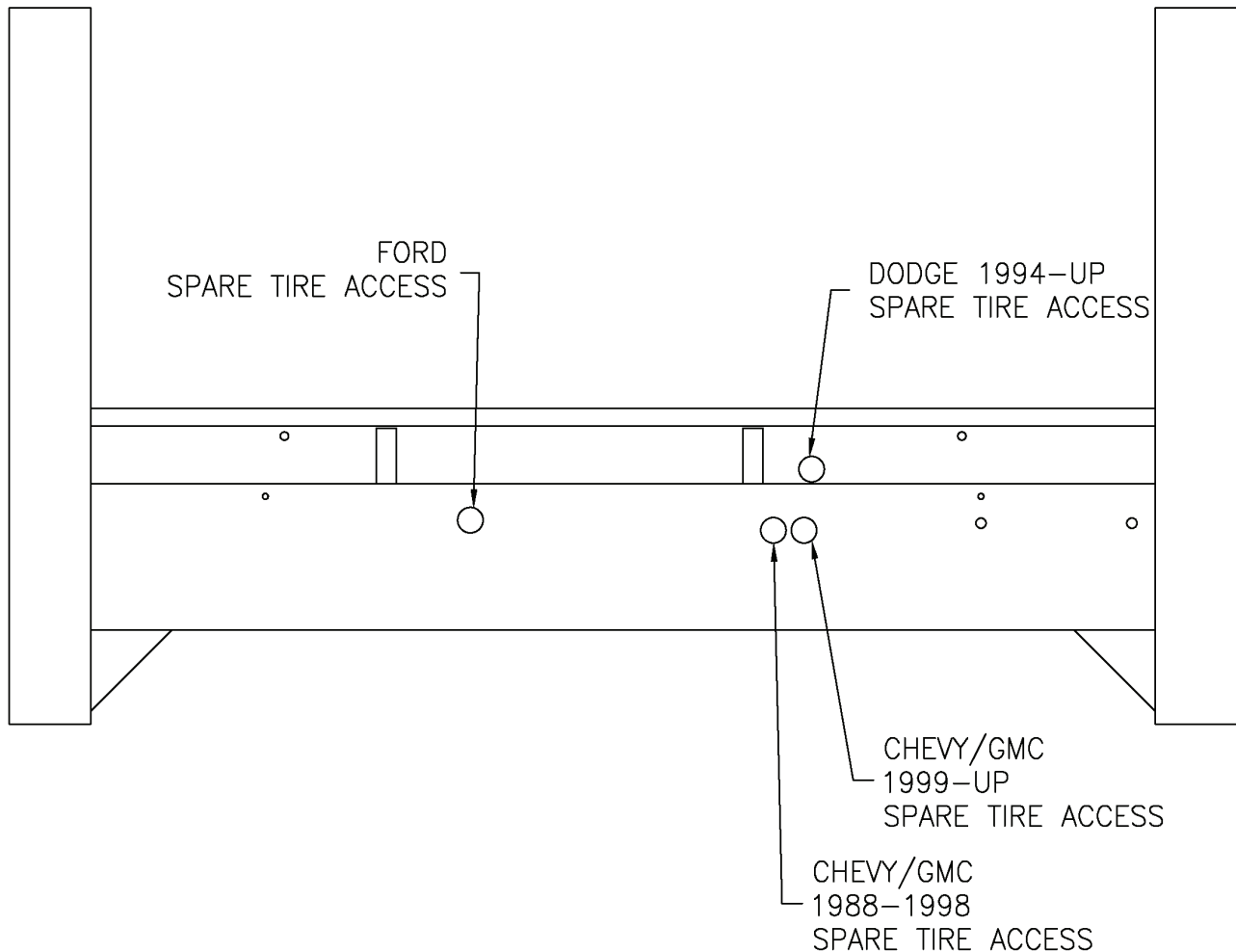


Figure 6 – Spare Tire Access Hole Locations

3. Insert spare tire access tool (supplied with vehicle) through proper hole and follow vehicle manufacturer's instructions for spare tire removal and replacement.
4. Replace plastic plug or main housing cover when finished changing tire.



SERVICE AND MAINTENANCE

NOTE: Service liftgate every 3 months, or when engine oil is changed on vehicle.

A. Preventative and Regular Service:

1. Check pins and retaining rings for wear and damage.

⚠ CAUTION! REPLACE IMMEDIATELY IF MISSING OR IF ANY SIGN OF WEAR IS OBSERVED.

2. Inspect all pins, shafts, retaining rings, bolts, nuts, and roll pins.

⚠ CAUTION! REPLACE IMMEDIATELY IF MISSING OR IF ANY SIGN OF WEAR IS OBSERVED.

3. Inspect all welds for cracks or fatigue. If found, repair welds as required (recommend taking to an authorized Eagle Lift distributor).
4. Inspect grease zerks at lift arms collars inside housing uprights. Grease with high quality graphite grease as necessary.
5. Check oil level in reservoir of pump.
 - a. Proper fluid level is approximately 1” below top of reservoir tank with cylinder fully retracted.
 - b. Fill reservoir with an ISO grade 32 hydraulic oil (equivalent to 10 W). Use a special high viscosity oil in cold weather climates. (Unit shipped with cold weather Hydraulic Oil).
6. Inspect fittings, hoses, pump assembly, and cylinder for leakage. Repair or replace as needed.
7. Inspect all electrical connections for tightness, corrosion, or damage. Make repairs as necessary.
 - a. Check battery terminals for proper connections, tightness, and corrosion.
 - b. Inspect battery cell fluid levels according to manufacturer’s instructions.

B. Checklist for safety features:

1. Gate does not operate unless parking lights are “ON”. Make sure to shut parking lights “OFF” when finished using liftgate.
2. When stored, safety storage latches hold liftgate platform securely in place.
3. All decals are in place and undamaged.

TROUBLESHOOTING GUIDE

PROBLEM	POSSIBLE CAUSES	SOLUTION
Load will not hold	Dirt in lowering valve or main check	Flush or replace the lowering valve
	Valve is electrically being told to stay on	Clean / reseal the check
	Bent stem on lowering valve	Correct electrical problem
Motor rotates but excessive noise	Motor bearings (ball)	Fix or replace motor
	Pump cavitation due to plugged suction screen or lack of breather	Check reservoir breather or suction screen
Motor spins but the lift will not raise	Lowering valve partially open	a) Flush lowering valve relief valve, OR
	Dirt in reservoir	b) Check the suction screen and reservoir breather, OR
	Reservoir does not have breather installed or is full of dirt	c) Check for worn pump
	Plugged suction screen or worn pump	
Motor starts but turns slow and lift is slow or will not raise at all	Battery voltage low at power unit	Check voltage at motor between stud and pump base. If voltage loss in wire, clean, tighten and/or replace. If cables are ok, check at battery or start vehicle to raise the voltage. Replace battery if voltage drop cannot be found
	Motor pulling high current, motor bearings lack lubrication	Run power unit with lights of vehicle on. If lights dim excessively, check motor for high current. Lube rear sleeve bearing or replace motor.
	Oil too thick or water in oil or motor frozen	Replace oil with the proper oil for temperature
	Gate pivot points rusted	Oil pivots and replace bad parts
Motor solenoid clicks but motor does not run	Bad connection between output of motor start solenoid and motor input terminal	Check wire/busbar and tighten or replace
	Motor is bad	Replace motor
	Pump is stuck and will not turn	Remove motor rotate pump input shaft clockwise; if it will not turn, replace pump
Unit does not raise; Motor does not run; OR Motor solenoid does not click	Bad connection in hot battery cable	Remove and clean battery cable at unit and at battery
	Bad ground pump/gate, gate/frame, frame battery	Use volt-OHM meter or a test light to track open circuits due to corrosion or broken wires; Check to see if the motor solenoid has power and if the solenoid coated wire is grounded or switched to ground on the manual unit
	Fuse/circuit breaker blown in power relay or battery cable	Use volt-OHM meter or a test light to track open circuits due to corrosion or broken wires; Check to see if the motor solenoid has power and if the solenoid coated wire is grounded or switched to ground on the manual unit
	Bad switch	Check wire/busbar and tighten or replace
	Bad or wrong motor start solenoid	Check wire/busbar and tighten or replace
	Loose control wiring	Tighten wire
	Bad power relay	Replace power relay
Platform will not lower	Bad control wiring to valve or a bad switch	Track down open circuit on both the feed side and the ground side
	Bent coil tower	Check for good ground path thru coil/cartridge interface; Clean rust, corrosion and check coil
	Rusted pivot points on gate or a stuck cylinder	Replace valve OR Replace cylinder

ELECTRICAL WIRING DIAGRAMS

STANDARD CONTROL

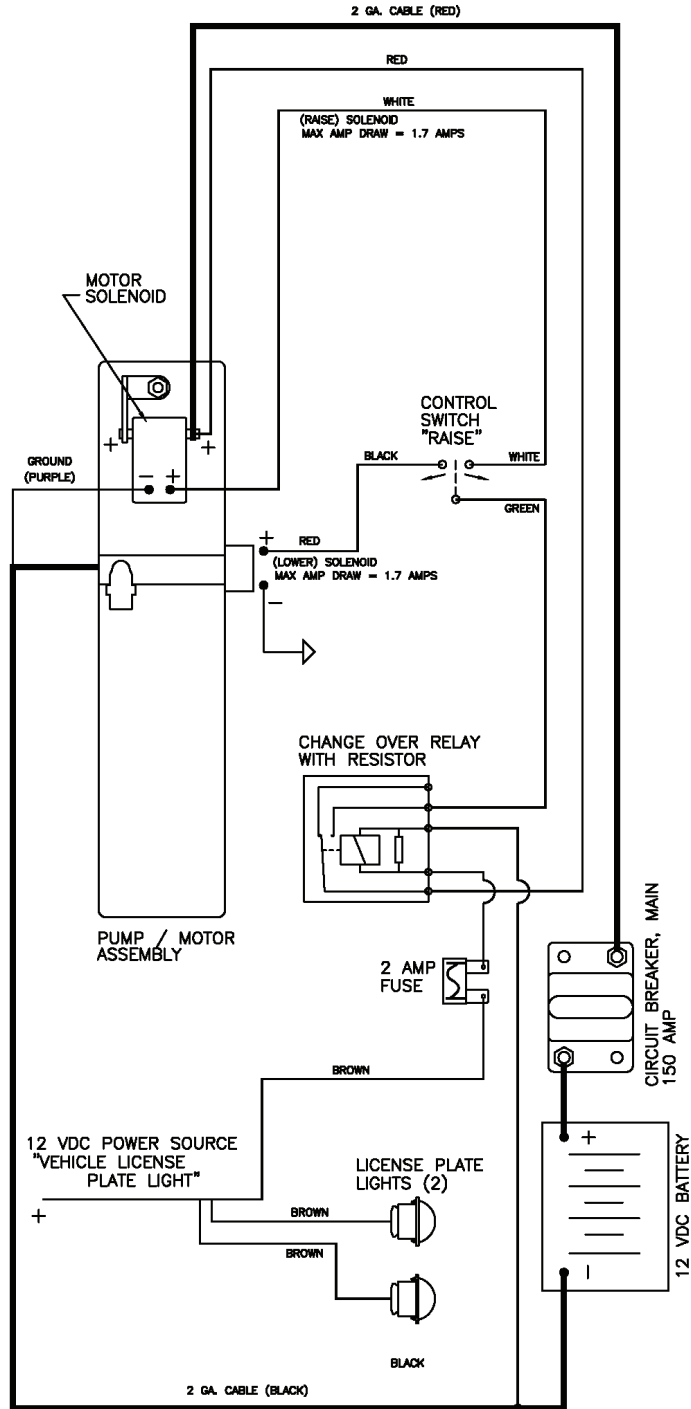


Figure 7 – Standard Control Diagram

OPTIONAL REMOTE CONTROL

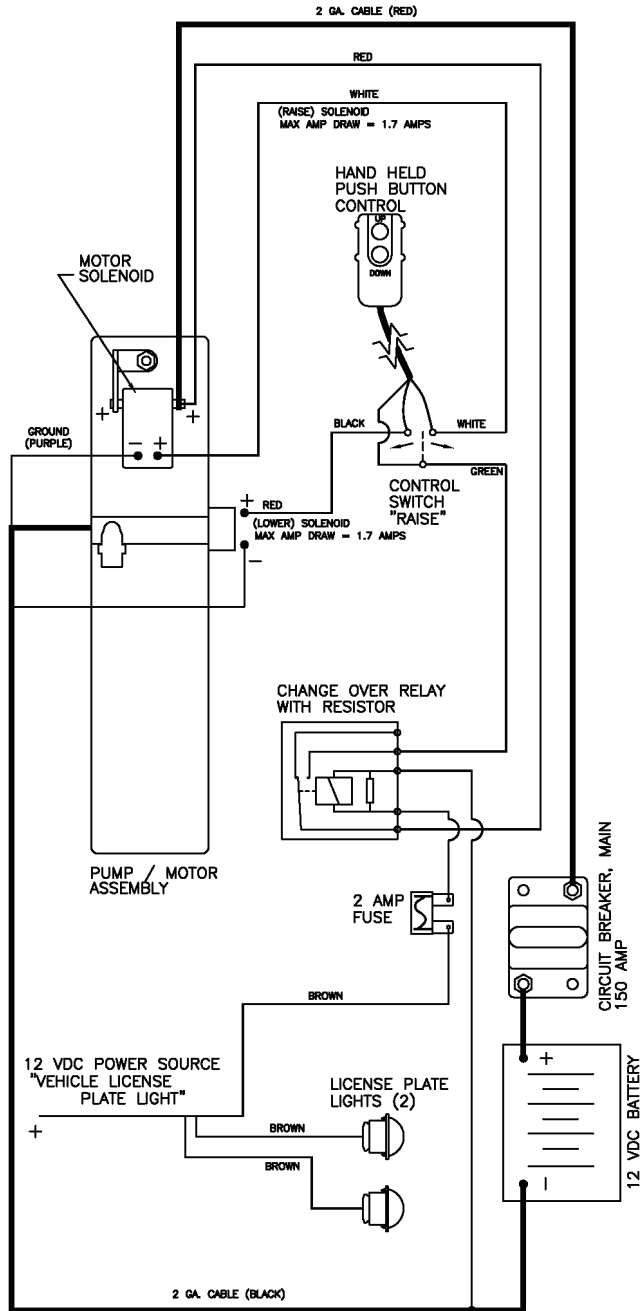


Figure 8 – Optional Remote Control Diagram

DECAL LOCATIONS

Every Eagle Lift Liftgate must have all caution and operation decals clearly posted as shown. This manual should remain in vehicle at all times as a guide to proper operation, safety, and maintenance of your liftgate.

When ordering replacement decals, give Model and Serial Number of your liftgate.

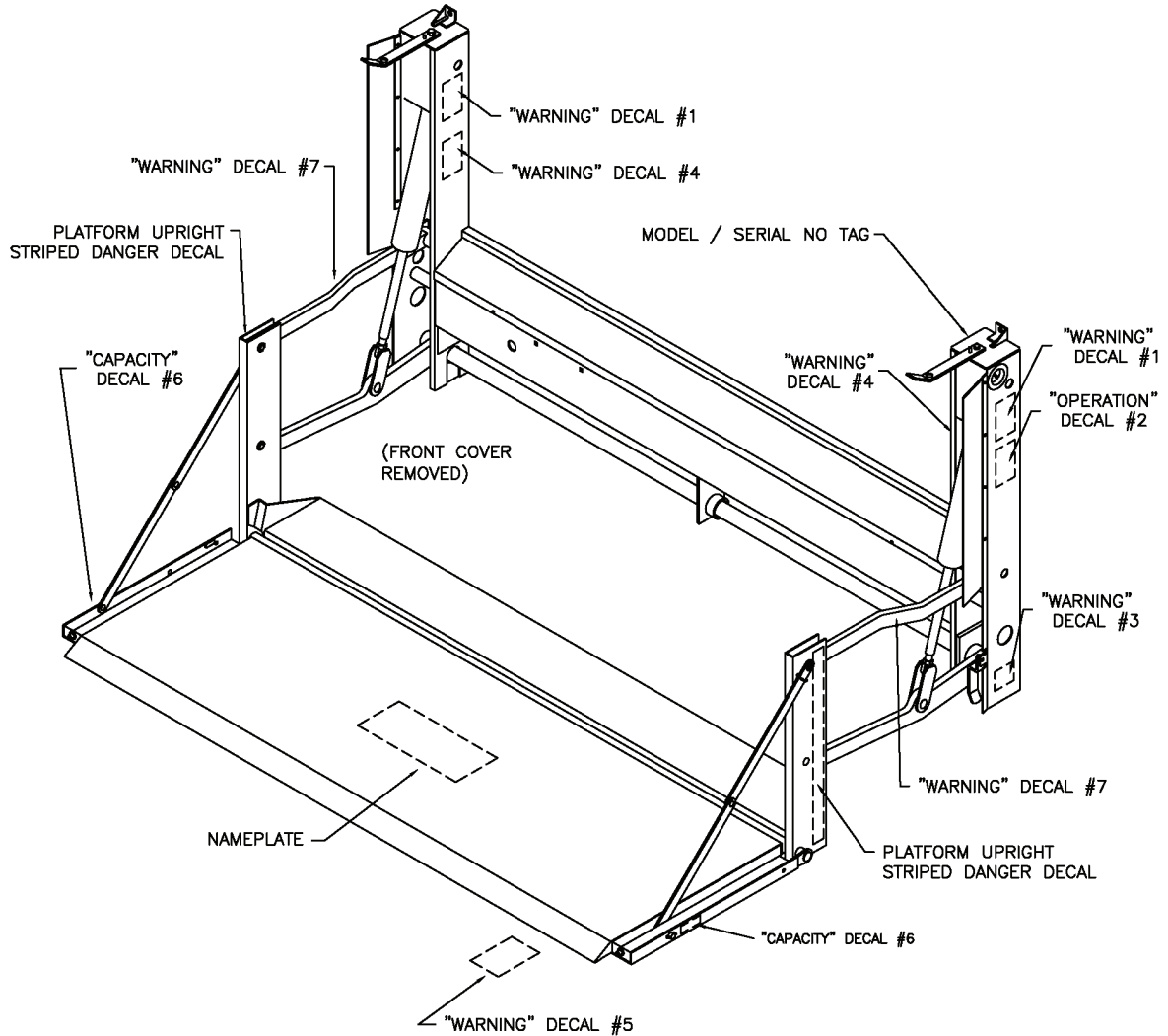
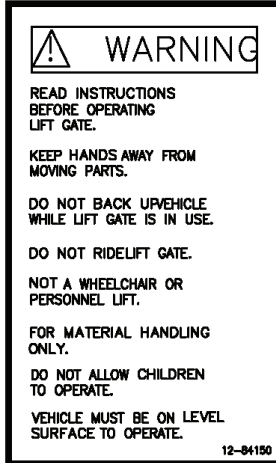


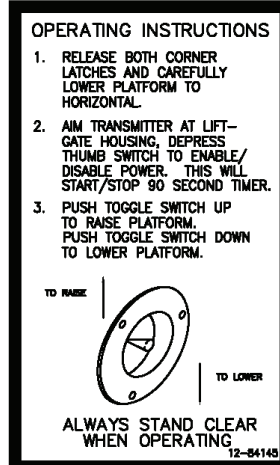
Figure 9 – Decal Location Diagram

DECALS

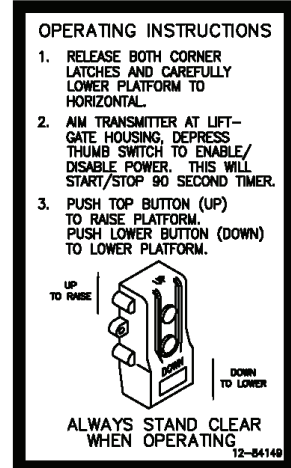
WARNING DECAL #1
QTY. REQ'D: 2



OPERATION DECAL #2
QTY. REQ'D: 1 (MANUAL)



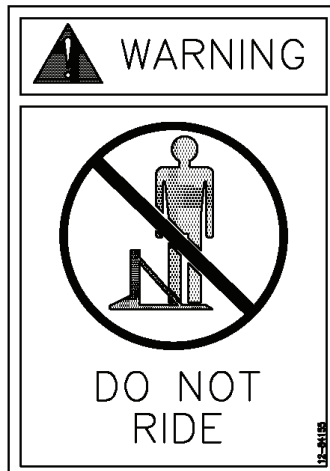
OPERATION DECAL #2
QTY. REQ'D: 1 (REMOTE)



WARNING DECAL #3
QTY. REQ'D: 1



WARNING DECAL #4
QTY. REQ'D: 2



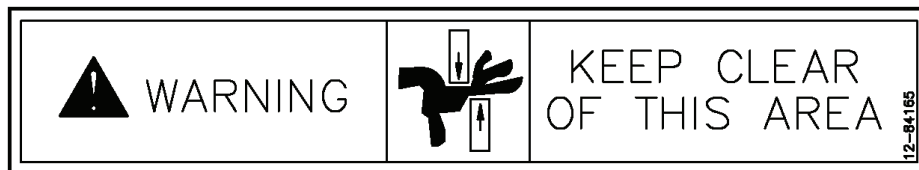
WARNING DECAL #5
QTY. REQ'D: 1



CAPACITY DECAL #6
QTY. REQ'D: 2



WARNING DECAL #7
QTY. REQ'D: 2



NAMEPLATE



Figure 10 – Decals

1-800-872-4283

LIFTGATE PARTS BREAKDOWNS

EDL SERIES

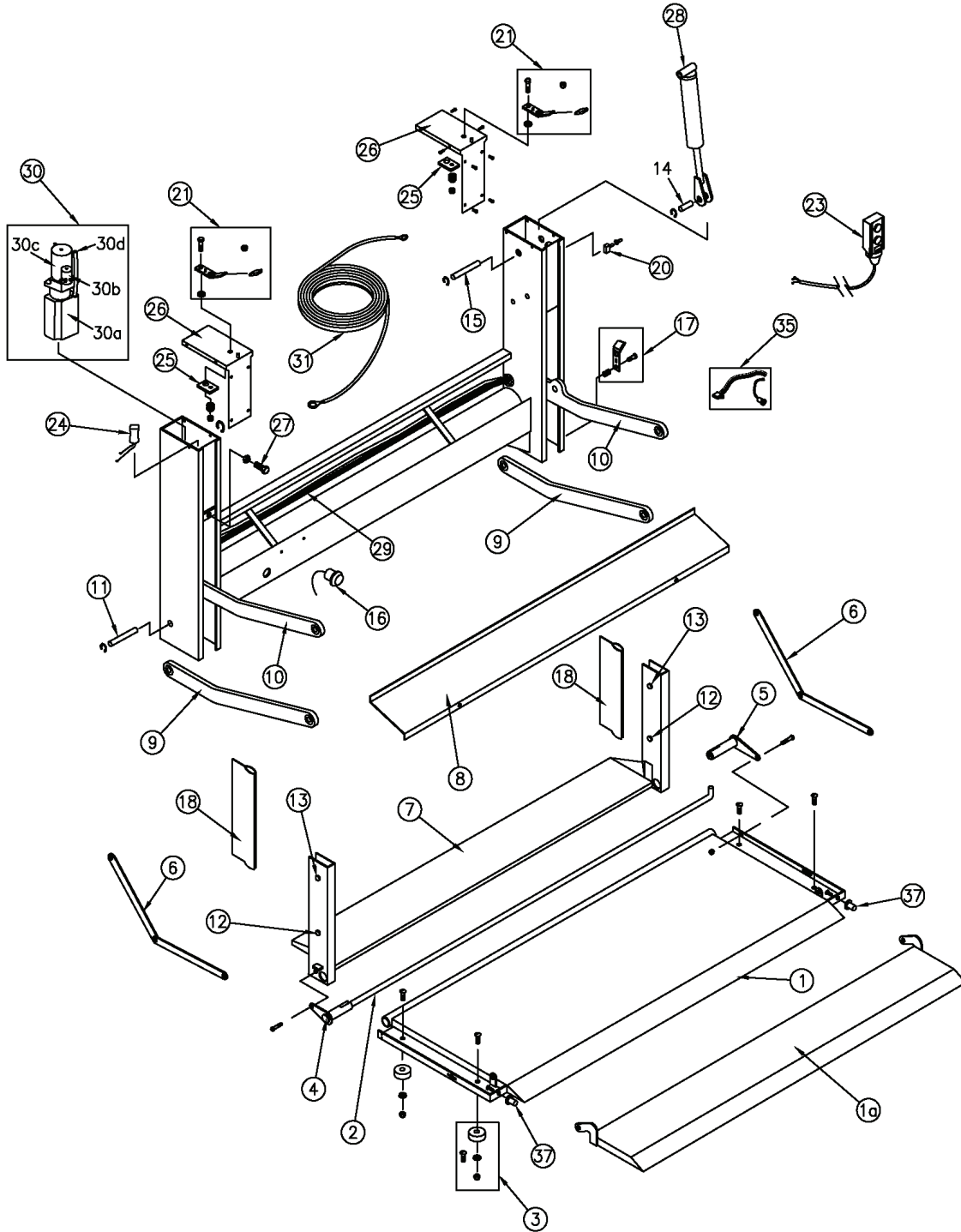


Figure 11 – Liftgate Parts Breakdown



EDL SERIES PARTS LIST

ITEM	PART NO.	DESCRIPTION	QTY
1	4340XXX	Platform Assembly (Model & Serial Number Required) TPX Steel	1
1	4461XXX	Platform Assembly (Need Liftgate Make, Model, & SN) Alum.	1
1a	43409XX	Flip-Over Ramp Assembly w/ Brackets, TPX Steel	1
1a	44910XX	Flip-Over Ramp Assy (Need Liftgate Make, Model & SN) Alum.	1
2	437000X	Torsion Spring	1
3	4299001	Platform Bumper Kit (Set of 4 - Includes Hardware)	1
4	4269033	Platform Spring Lock, RDS	1
5	4269004	Platform Spring Lock, CBS	1
6	4322769	Platform Link Assembly, Zinc Plated	2
7	435500X	Platform Housing Assembly	1
8	431001X	Housing Cover	1
9	4332001	Parallel Arm Assembly	2
10	N/A	Lift Arm Assembly	1
11	4375001	Lower Parallel Arm Pin w/ Retaining Ring	2
12	4275023	Pivot Pin w/ Retaining Ring	2
13	4275021	Link Pivot Pin w/ Retaining Ring	2
14	4375003	Cylinder Clevis Pin w/ Retaining Ring	1
15	4375002	Cylinder Trunnion Pin w/ Retaining Ring	1
16	1734510	License Plate Light	2
17	4399501	Fold-Down Latch Kit (Includes Hardware)	1
18	1481801	Rubber Extrusion Seal 17"	1
19	1481802	Rubber Extrusion Seal 23"	1
20	1144103	Toggle Switch w/ Boot	1
21	4399011	Storage Latch Kit (Includes Hardware)	2
22	4399065	Cap Set (Includes 3-Latch) (Not Shown)	1
23	1330115	Control Box w/ 7' Cord (Remote Push Button Control)	1
24	1190026	Audible Safety Alarm (Back-up Alarm)	1
25	4310006	Storage Latch Reinforcement Plate	2
26	4310005	Cover, Main Housing Upright	2
27	1030360	1/2-13 x 1 1/4 Long Bolt (Includes 1060150 1/2-13 Jam Nut)	1
28	2905001	Cylinder Assembly - Complete	1
28a	2905011	Cylinder Seal Kit (Not Shown)	1
28c	2905111	Cylinder Rebuild Kit (Seals, Piston, Head, Key, Nut) (Not Shown)	1
29	3122355	Hydraulic Hose Assembly	1
30	1300210	Hydraulic Pump / Motor Assembly	1
30a	1330365	Reservoir Tank w/ Seal	1
30b	1330330	Solenoid Switch	1
30c	1330185	Motor	1
30d	1330240	Vent Plug (Reservoir)	1
30e	1300488	Lowering Solenoid (Not Shown)	1
31	4350095	4 GA x 30' Electrical Power Cable w/ Terminal Ends	1
32	4250096	4 GA x 30' Ground Cable w/ Terminal Ends (Not Shown)	1
33	4399401	Decal Set (Not Shown)	1
34	4299083	Clip Ring Set (Not Shown)	1
35	1731289	Wiring Harness Assembly with Relay	1
36	1474312	150 Amp Circuit Breaker (Not Shown)	1
37	4499011	Platform Latch Tab kit with Bolt	2

*Part numbers apply to liftgates manufactured since 12/08. For liftgates manufactured prior to 12/08, please contact an authorized Eagle Lift distributor for part numbers.

EDL16 SERIES PARTS BREAKDOWN

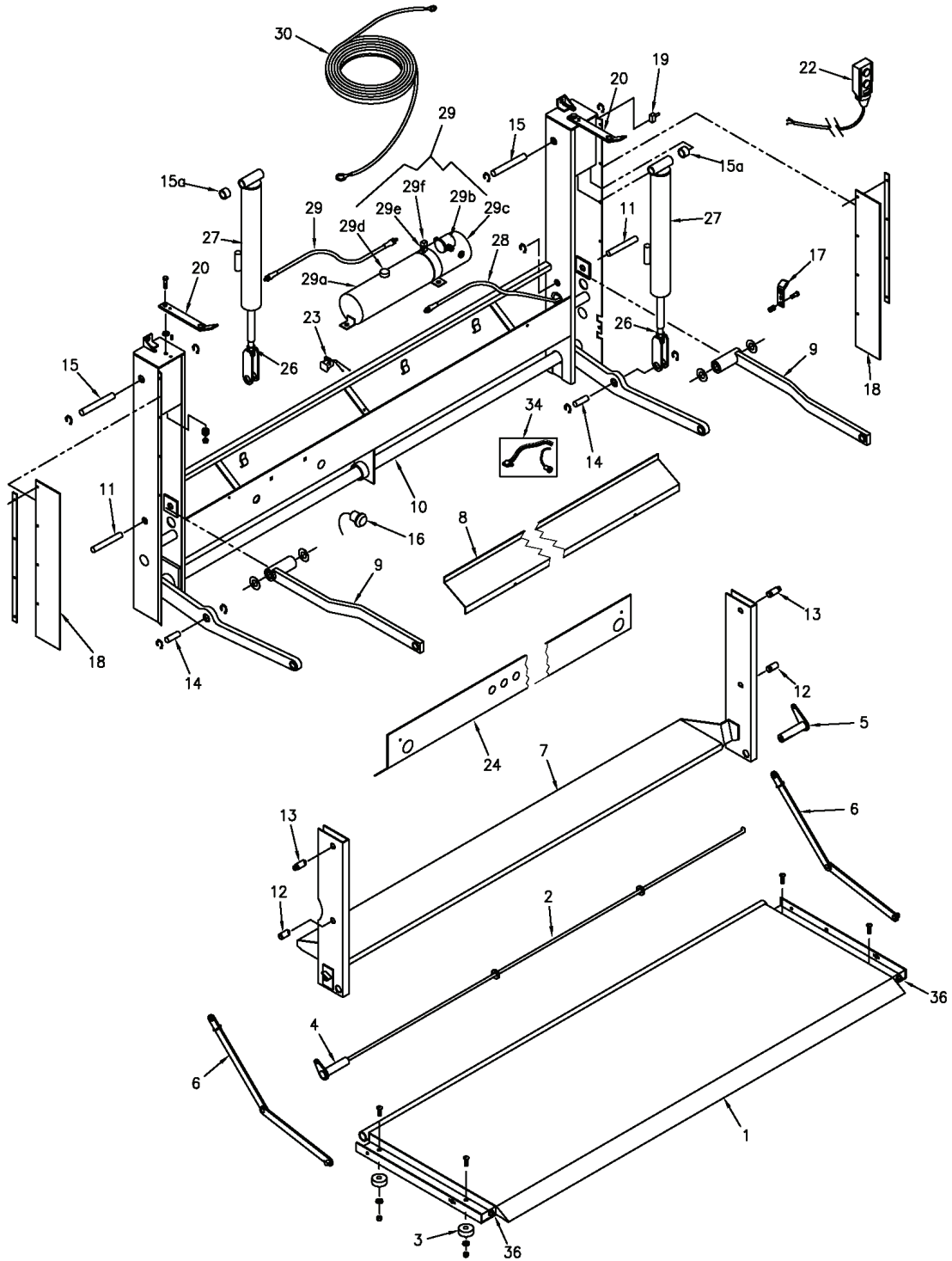


Figure 12 – Liftgate Parts Breakdown



EDL16 SERIES PARTS BREAKDOWN

ITEM	PART NO.	DESCRIPTION	QTY
1	42605XX	Platform Assembly, TPX Steel	1
1	44710XX	Platform Assembly (Need Liftgate Make, Model & SN) Aluminum	1
2	427514X	Torsion Spring	1
3	4299001	Platform Bumper Kit (Set of 4 - Includes Hardware)	1
4	4269033	Platform Spring Lock, RSD	1
5	4269004	Platform Spring Lock, CBSD	1
6	4322789	Platform Link Assembly Zinc Plated	2
7	435500X	Platform Housing Assembly	1
8	431002X	Housing Cover	1
9	4333012	Upper Parallel Arm Assembly w/ Nylon Washers	2
10	N/A	Lift Arm / Torque Shaft Assembly	1
11	4375004	Upper Parallel Arm Pin w/ Retaining Ring	2
12	4275023	Pivot Pin w/ Retaining Ring	2
13	4275021	Link Pivot Pin w/ Retaining Ring	2
14	4375006	Cylinder Clevis Pin w/ Retaining Ring	2
15	4375005	Cylinder Trunnion Pin w/ Retaining Ring	2
15a	4350021	Cylinder Trunnion Spacer	2
16	1734510	License Plate Light	2
17	4399501	Fold-Down Latch Kit (Includes Hardware)	1
18	1540103	Rubber Belt Seal	2
19	1144103	Toggle Switch w/ Boot	1
20	4399015	Storage Latch Kit (Includes Hardware)	2
21	4399065	Cap Set (Includes 3-Latch) (Not Shown)	1
22	1330115	Control Box w/ 7' Cord	1
23	1190026	Audible Safety Alarm (Back-up Alarm)	1
24	4310XXX	Cover, Torque Shaft	1
25	1061243	3/4-16 UNF Jam Nut (Not Shown)	2
26	2905102	Cylinder Clevis Assembly	2
27	2905002	Cylinder Assembly - Complete w/ Clevis	2
27a	2905011	Cylinder Seal Kit (Not Shown)	2
27c	2905111	Cylinder Rebuild Kit (Seals, Piston, Head, Key, Nut) (Not Shown)	2
27d	2905921	Flow Control Valve	2
28	3122366	Hydraulic Hose Assembly	2
29	1300320	Hydraulic Pump / Motor Assembly	1
29a	*	Reservoir Tank w/ Seal (Special Order Only Through Eagle Lift)	1
29b	1330300	Solenoid Switch (Three Terminal Post)	1
29c	1330180	Motor 12 VDC	1
29d	1330280	Cap Assembly / Vent	1
29e	3123860	Street Tee Adapter, 1/4 NPT (included in hose kit) (Not Shown)	1
29f	3123855	Street Elbow 1/4 NPT - 90 Deg. (included in hose kit) (Not Shown)	1
29g	1330325	Single Acting Electric Lowering Valve Assy (Not Shown)	1
30	4250093	2 GA x 30' Electrical Power Cable w/ Terminal Ends	1
31	4250095	2 GA x 30' Ground Cable w/ Terminal Ends (Not Shown)	1
32	4399402	Decal Set (Not Shown)	1
33	4299083	Clip Ring Set (Not Shown)	1
34	1731289	Wiring Harness Assembly with Relay	1
35	1474312	150 Amp Circuit Breaker (Not Shown)	1
36	4499011	Platform Latch Tab kit with Bolt	2

*Part numbers apply to liftgates manufactured since 12/08. For liftgates manufactured prior to 12/08, please contact an authorized Eagle Lift distributor for part numbers.