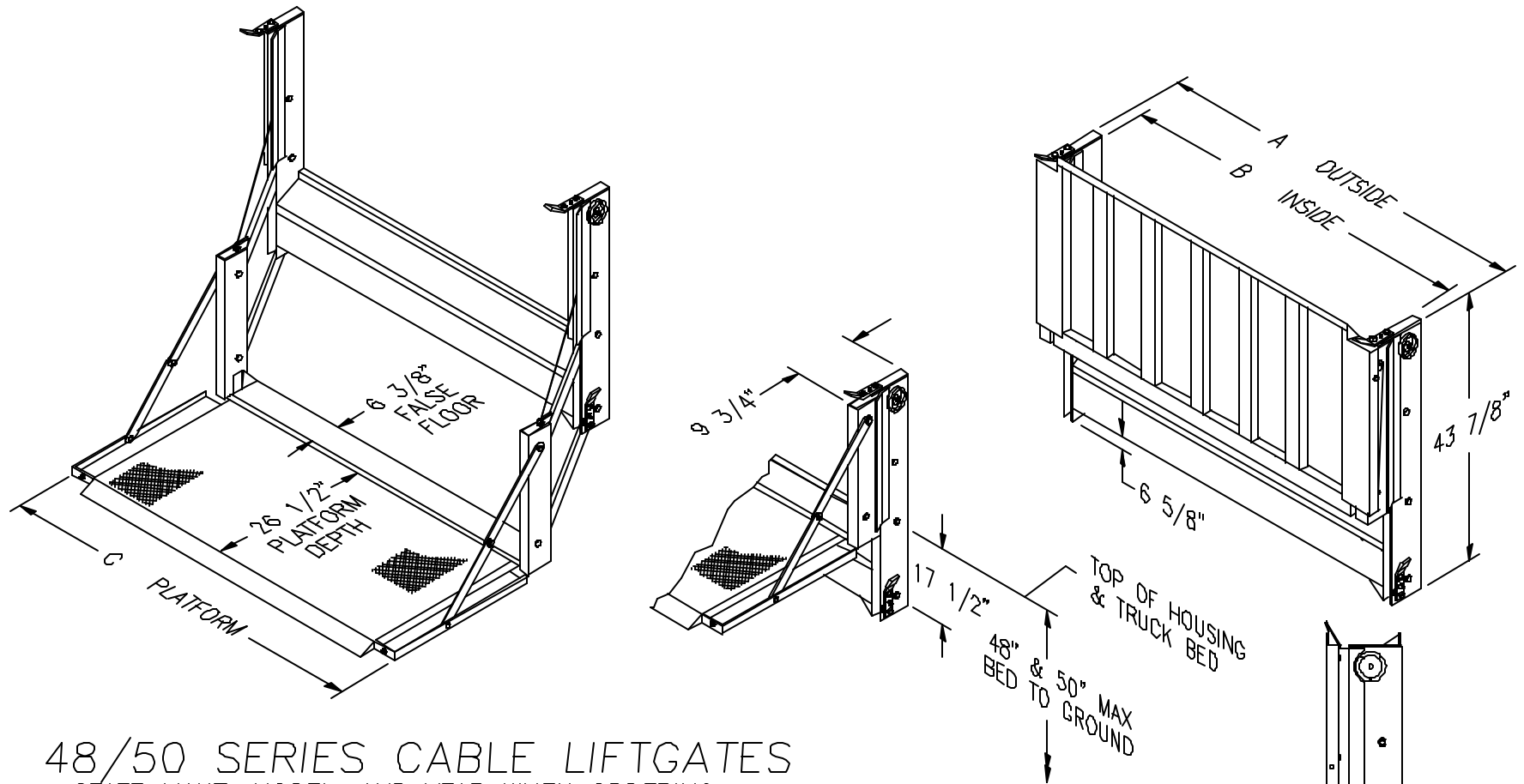


EAGLELIFT PALFINGER



48/50 SERIES CABLE LIFTGATES

STATE MAKE, MODEL, AND YEAR WHEN ORDERING

| MODEL | A | B | C | *APPROX. WGT. | CG (X) | CG (Y) |
|-----------|---------|---------|---------|---------------|--------|--------|
| E48-64 | 65 5/8" | 63 1/8" | 68" | 485# | 5.42" | 22.02" |
| E48-72 | 71 7/8" | 69 3/8" | 74 1/4" | 535# | 5.42" | 22.02" |
| E48/50-78 | 80 3/8" | 77 7/8" | 82 3/4" | 625#/690# | 5.42" | 22.02" |
| E48/50-86 | 85 7/8" | 83 3/8" | 88 1/4" | 660#/710# | 5.42" | 22.02" |
| E48/50-91 | 90 7/8" | 88 3/8" | 93 1/4" | 690#/720# | 5.42" | 22.02" |

*NOTE: WEIGHTS DO NOT INCLUDE MOUNTING BRACKETS OR HARDWARE